

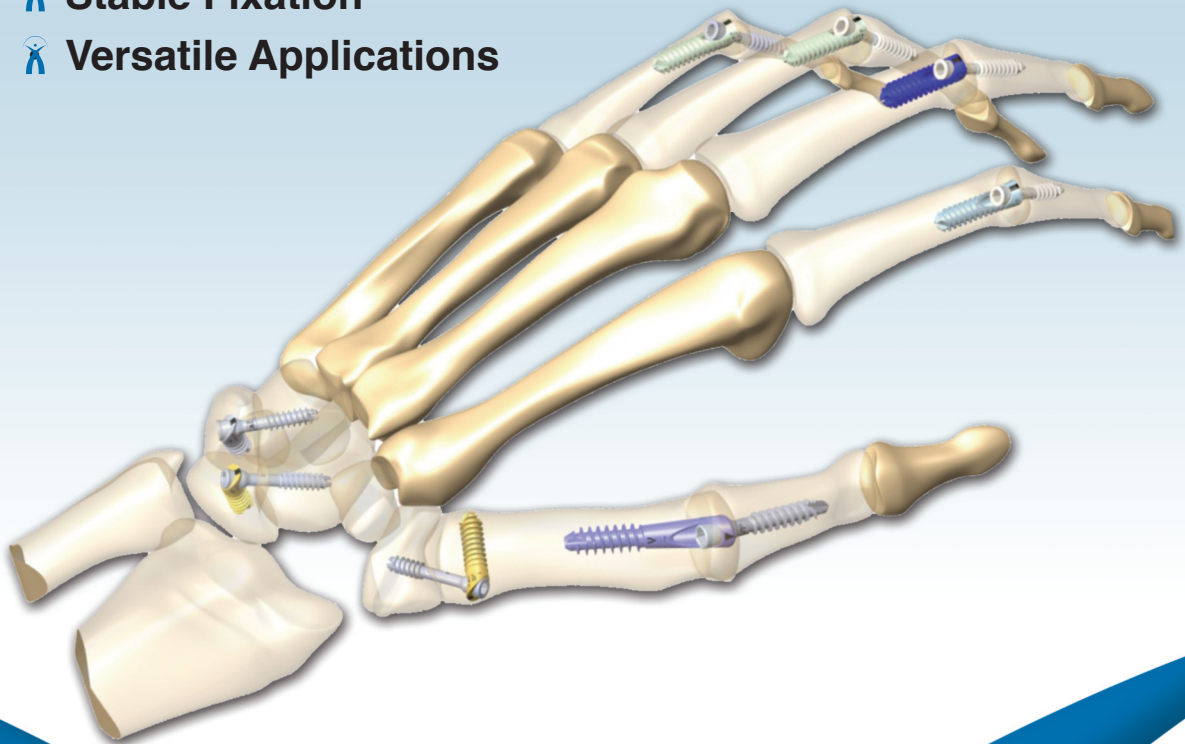


**Fusion Fixation**

*Intraosseous Fixation Platform*

# The UpperFiX™ Advantage: *Designed for Fusion*

-  **Zero Profile**
-  **Stable Fixation**
-  **Versatile Applications**



**EXTREMITY**  
MEDICAL™



# The CarpalFi™ Advantage: *Designed for Fusion*

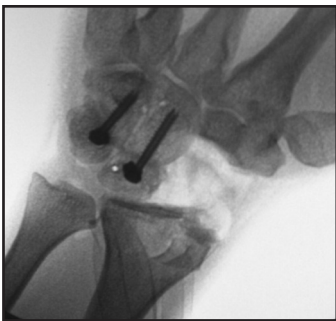
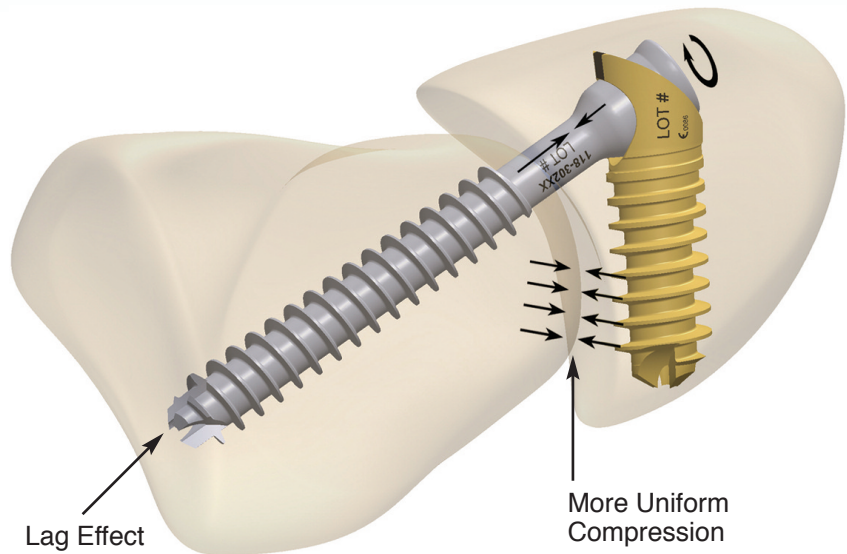
## Zero Profile

## Stable Fixation

- Uniform Compression
- X-Post acts as a reinforced cortical bone bridge
- Morse Taper Lock

## Versatility

- Multiple angles (45°, 60°, 75°) allow for versatile placement



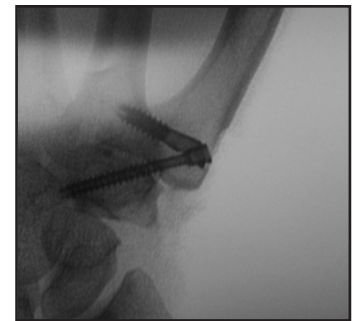
Midcarpal Joint Arthrodesis  
with Scaphoid Excision




Radio-Lunate Arthrodesis



Radio-Scaphoid-Lunate  
Arthrodesis






Carpometacarpal (CMC)  
Fusion

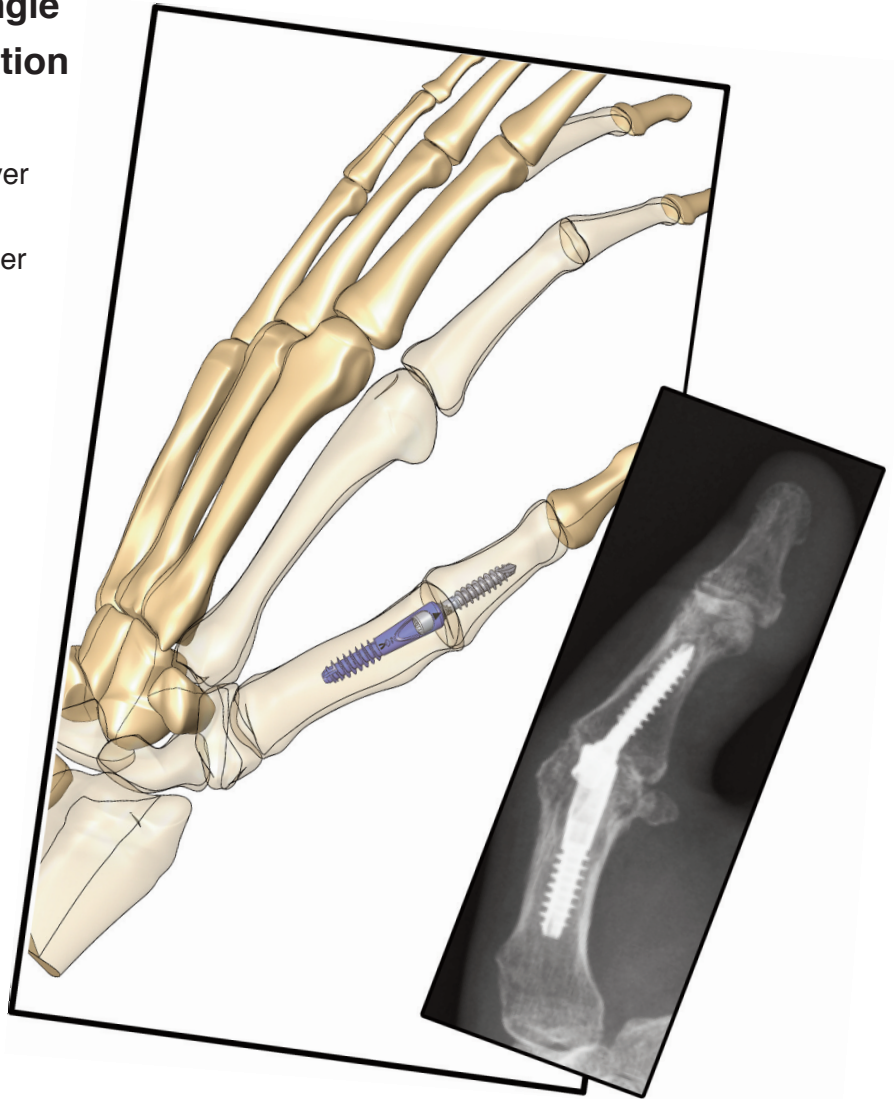
The  **CarpalFi** System is intended for the reduction and internal fixation of arthrodesis, osteotomies, intra- and extraarticular fractures and nonunions of the small bones of the hand and wrist. This two-part construct is specifically intended for Capito-Lunate, and Triquetral-Hamate arthrodesis.



Fusion Fixation

# The Intramedullary Fixation Advantage: *Designed for Fusion*




-  **Zero Profile**
-  **Fixed Reproducible 25° Angle**
-  **Stable Intramedullary Fixation**
  - Strong Compression
  - Post distributes bending forces over a greater surface area
  - Post/Screw lock with a Morse Taper



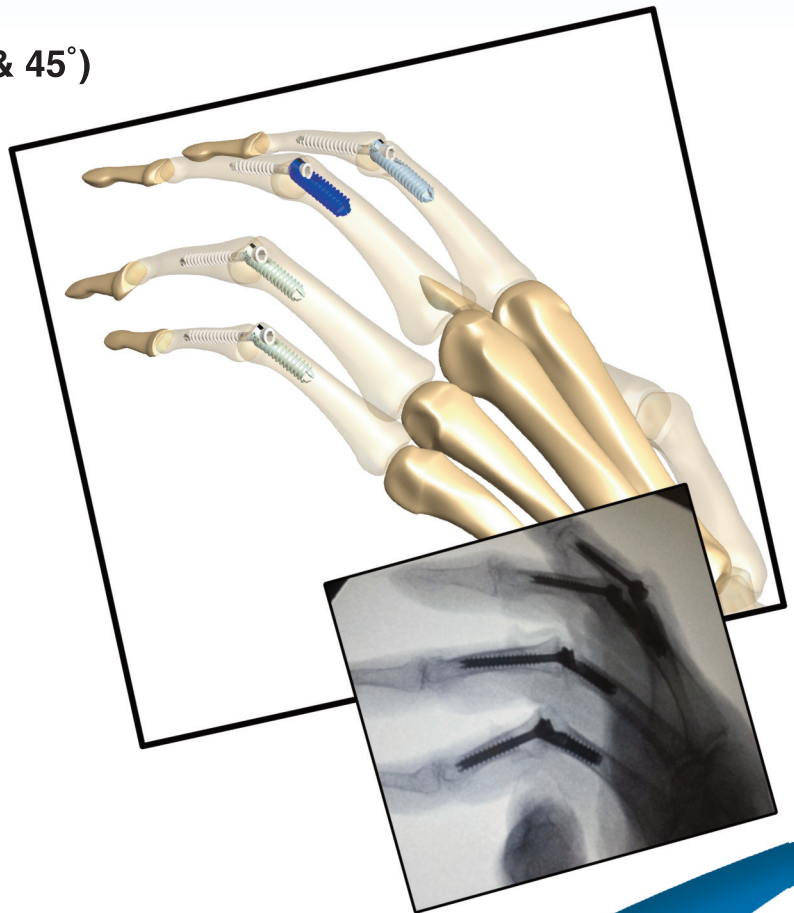


**Fusion Fixation**

# The Intramedullary Fixation Advantage: *Designed for Fusion*

-  **Zero Profile**
-  **Fixed Reproducible Angles (30° & 45°)**
-  **Stable Intramedullary Fixation**

- Strong Compression
- Post distributes bending forces over a greater surface area
- Post/Screw lock with a Morse Taper



**APEX** is intended for reduction and internal fixation of arthrodesis of the interphalangeal joints of the hand.

Before use, physicians should review all risk information and essential prescribing information which can be found in each of the products instruction for use.

300 Interpace Parkway  
Suite 410  
Parsippany, NJ 07054  
Phone: 973.588.8980  
Customer Service: 888.499.0079  
Fax: 888.499.0542  
[www.extremitymedical.com](http://www.extremitymedical.com)



**CE** 2797

Patent Pending  
Extremity Medical, CarpalFIX, UpperFIX, XMCP and  
ApeX are trademarks of Extremity Medical, LLC.  
©Extremity Medical, LLC. 2013. All rights reserved.

MKT-UFX-20130610 Rev B. 01/2020