

3.0 Screw (Measurement in mm)

Length:
16mm to 40mm (in 2mm increments)

Shaft Diameter	Major Diameter	Minor Diameter
2.0	3.0	2.0

4.5 Screw (Measurement in mm)

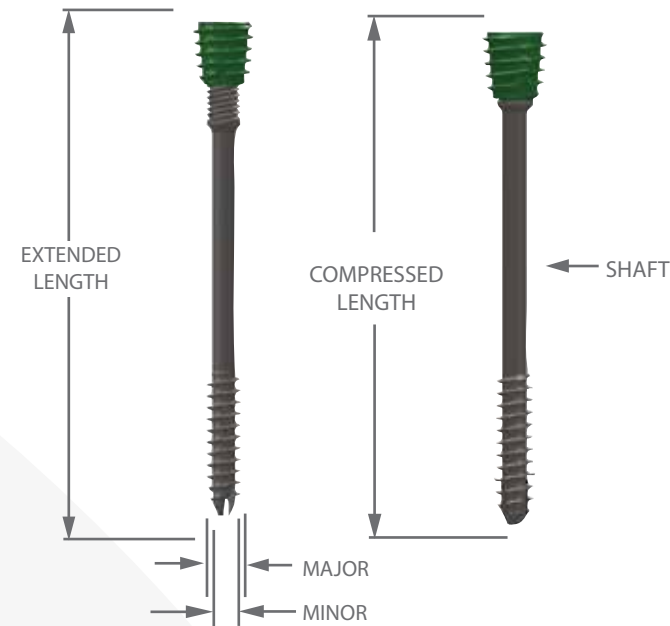
Length:
26mm to 40mm (in 2mm increments)
40mm to 60mm (in 4mm increments)

Shaft Diameter	Major Diameter	Minor Diameter
3.4	4.5	3.0

6.5 Screw (Measurement in mm)

Length:
30mm to 90mm (in 5mm increments)

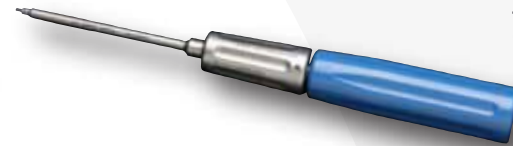
Shaft Diameter	Major Diameter	Minor Diameter
4.5	6.5	3.0



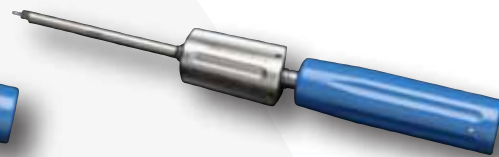
101-00000
Instrument Tray



101-00020
3.0 Screwdriver



101-00021
4.5 and 6.5mm Screwdriver



CompressX™ Screw Catalog Numbers					
3.0 CompressX™ Screw		4.5 CompressX™ Screw		6.5 CompressX™ Screw	
101-30016	3.0 x 16mm	101-45026	4.5 x 26mm	101-65030	6.5 x 30mm
101-30018	3.0 x 18mm	101-45028	4.5 x 28mm	101-65035	6.5 x 35mm
101-30020	3.0 x 20mm	101-45030	4.5 x 30mm	101-65040	6.5 x 40mm
101-30022	3.0 x 22mm	101-45032	4.5 x 32mm	101-65045	6.5 x 45mm
101-30024	3.0 x 24mm	101-45034	4.5 x 34mm	101-65050	6.5 x 50mm
101-30026	3.0 x 26mm	101-45036	4.5 x 36mm	101-65055	6.5 x 55mm
101-30028	3.0 x 28mm	101-45038	4.5 x 38mm	101-65060	6.5 x 60mm
101-30030	3.0 x 30mm	101-45040	4.5 x 40mm	101-65065	6.5 x 65mm
101-30032	3.0 x 32mm	101-45044	4.5 x 44mm	101-65070	6.5 x 70mm
101-30034	3.0 x 34mm	101-45048	4.5 x 48mm	101-65075	6.5 x 75mm
101-30036	3.0 x 36mm	101-45052	4.5 x 52mm	101-65080	6.5 x 80mm
101-30038	3.0 x 38mm	101-45056	4.5 x 56mm	101-65085	6.5 x 85mm
101-30040	3.0 x 40mm	101-45060	4.5 x 60mm	101-65090	6.5 x 90mm

Instrument Catalog Numbers	
101-00000	Instrument Tray
101-00001	3.0mm Screw Caddy
101-00002	4.5 / 6.5mm Screw Caddy
101-00004	Guidewire 0.9mm
101-00006	Guidewire 1.6mm
101-00008	Guidewire Holder 0.9mm
101-00009	Guidewire Holder 1.6mm
101-00010	Screw Measuring Device
101-00011	2.0mm Cannulated Drill
101-00012	3.4mm Cannulated Drill
101-00013	4.5mm Cannulated Drill
101-00014	3.0mm Countersink
101-00015	4.5mm and 6.5mm Countersink
101-00016	3.0mm Guide - Drill and Guidewire
101-00017	4.5mm Guide - Drill and Guidewire
101-00018	6.5mm Guide - Drill and Guidewire
101-00027	3.0mm Tissue Protector
101-00019	4.5mm / 6.5mm Tissue Protector
101-00020	3.0 Screwdriver
101-00021	4.5 and 6.5mm Screwdriver
101-00022	Cleaning Brush - 0.9mm
101-00023	Cleaning Brush - 1.6mm
101-00024	3.0 CompressX™ X-Ray Template
101-00025	4.5 CompressX™ X-Ray Template
101-00026	6.5 CompressX™ X-Ray Template

Patent Pending
CAUTION: Federal Law (USA) restricts this device to sale by or on the order of a physician.

INDICATIONS FOR USE

The Extremity Medical Compression Screw is intended for reduction and internal fixation of arthrodeses, osteotomies, intra- and extra-articular fractures and nonunions of the small bones and joints of the foot and hand. Examples include scaphoid fractures, tarsal and metatarsal fracture, hand, wrist, foot and ankle arthrodeses, metacarpal and metatarsal arthrodeses, distal radius fractures.

CompressX™ Compression Screw allows user to adjust the amount of compression across fragments. Available in three sizes (3.0mm, 4.5mm, 6.5mm).

STEP 1

Template X-ray to estimate screw size length.



STEP 2

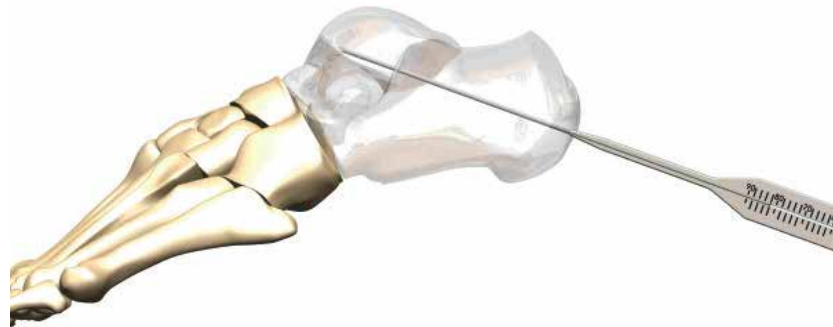
Advance the guidewire to the desired screw placement location.

Screw	Guidewire
Ø3.0	Ø0.9
Ø4.5	Ø1.6
Ø6.5	Ø1.6



STEP 3

Measure the length for the screw.



STEP 4

Subtract 3mm from measured length to select correct screw length to accommodate compression length.



STEP 5

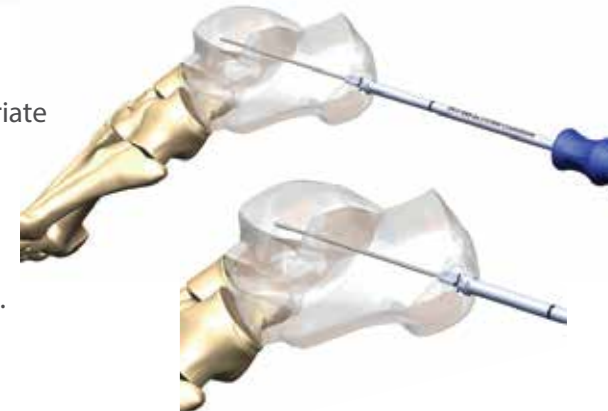
Using the appropriate sized drill, advance to measured screw length.

Screw	Drill
Ø3.0	Ø2.0
Ø4.5	Ø3.4
Ø6.5	Ø4.5



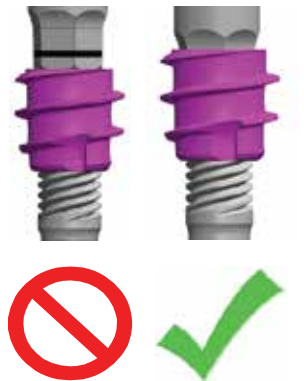
STEP 6

Place the appropriate countersink over the guidewire and advance until black line is flush with bone.



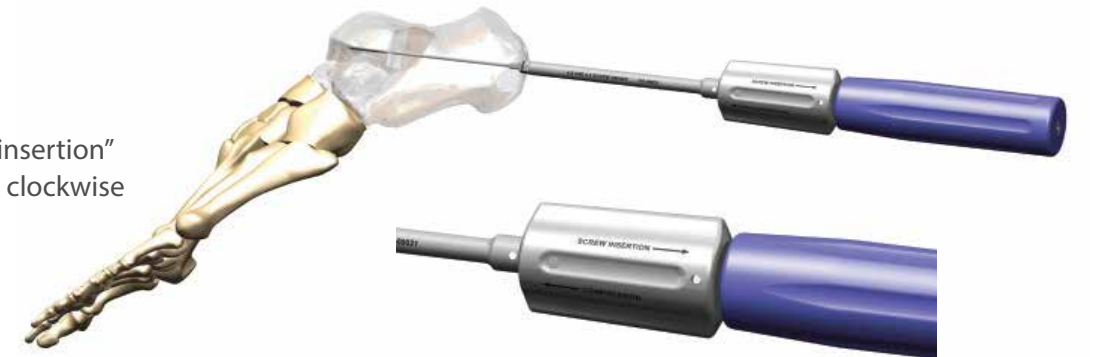
STEP 7

Ensure screw is in extended position. Seat driver so black line is covered.



STEP 8

With the driver in "screw insertion" mode, rotate screwdriver clockwise to insert screw until flush with bone.



STEP 9

With the driver in "compression" mode, hold the blue handle and rotate silver compression collar clockwise to desired compression.



REMOVAL

With the driver in "compression" mode align both hex drives of the screwdriver into the screw. Switch the driver to "screw insertion" mode and back screw out.

Screw	Driver
Ø3.0	Ø3.0
Ø4.5	Ø4.5/Ø6.5
Ø6.5	Ø4.5/Ø6.5