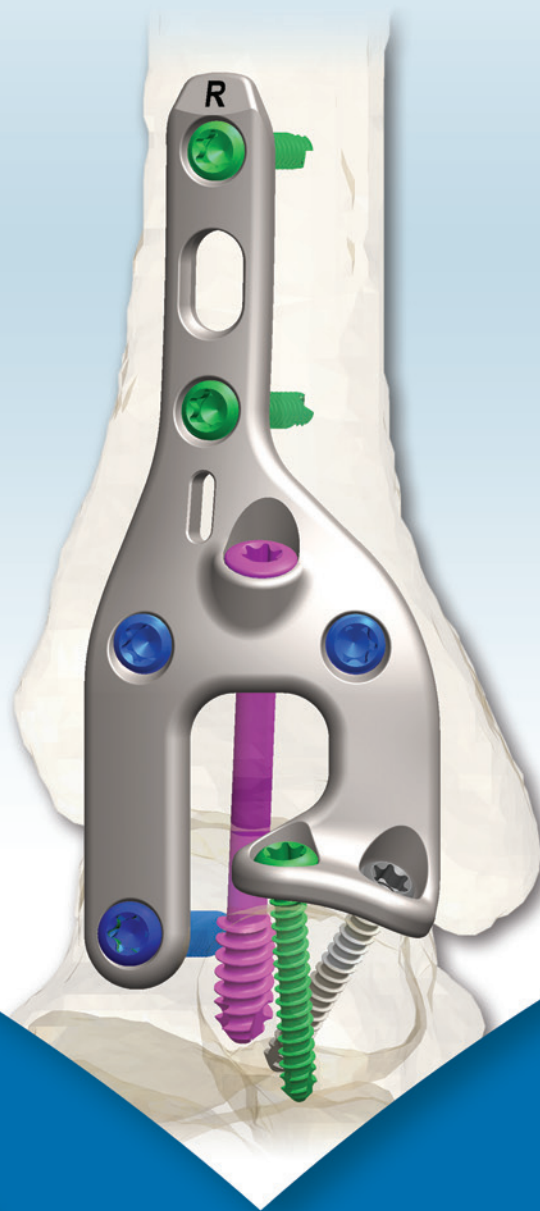




**Uniform Compression and Stability
Delivered with the Simplicity of a Single
Anterior Approach**



Uniform Compression

Home Run Screw:

Compression from Posterior Talus

Lateral Tab Screw:

Buttress effect – distributes compression across the joint as the **Home Run Screw** is placed

Features and Benefits

- Anatomically contoured plate minimizes bone preparation and allows for efficient plate placement
- Novel plate designed to generate uniform axial compression
- Home Run Screw works through the plate to deliver additional compression across the TT or the TTC joint
- Fusion Window allows visualization of the fusion site and compatibility with grafting techniques
- Implant versatility enables surgeon to address a variety of clinical applications and pathologies

A Unique Anterior Plate Designed to Deliver Uniform Axial Compression, Optimize Stability and Allow for Clear Visualization of the Fusion Site

Optimum Stability

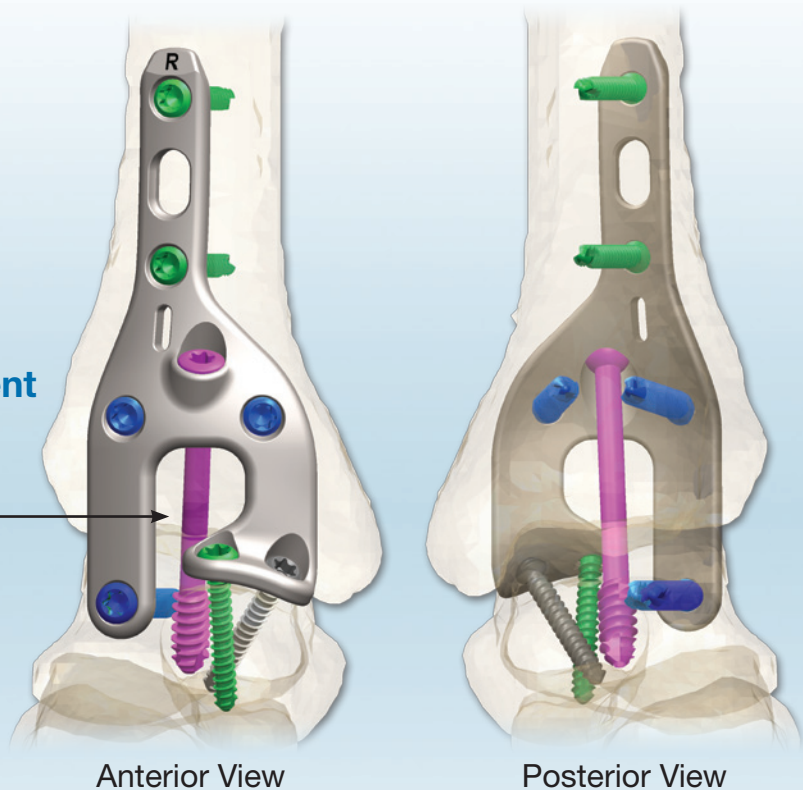
- Multiplanar Fixation
- Converging Screws
- Lateral Tab Screw
- Home Run Screw

Efficient and Precise Placement

- Fixed angle locking screws

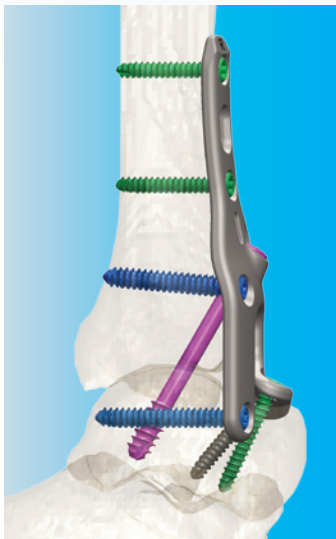
Fusion Window

- Visualize Fusion Site
- Ideal Graft Window

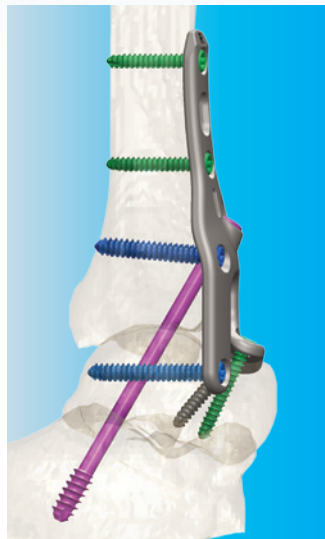


Versatile Application

TT Fusion



TTC Fusion



Total Ankle Replacement Revision

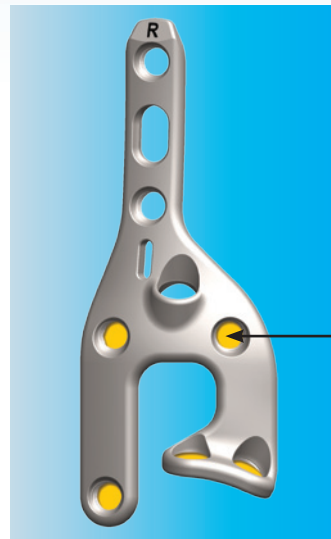
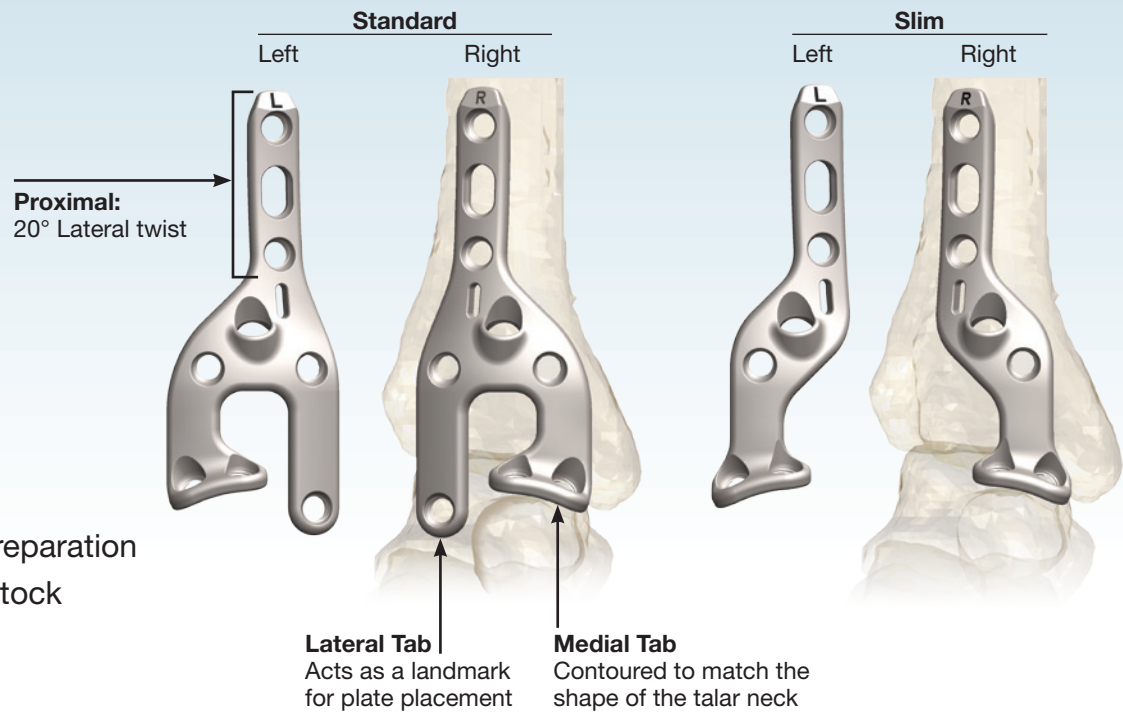


Plate screw holes:
Allow for fixation around removed implant

Achieve TT or TTC fusion with the Home Run Screw

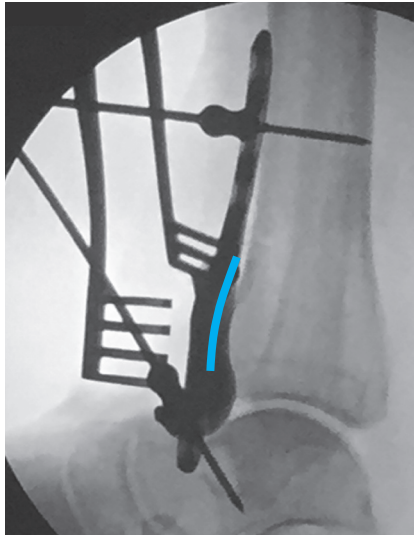


Anatomically Contoured

- Anatomic Fit
- Minimize tibia preparation
- Preserve bone stock

Distal Anterior Bow

Contoured to Distal Tibia



Screw Type	Major Diameter	Length Options	Core
Locking	5.0mm	30-50mm	Solid
	4.0mm	22-45mm	
Non-Locking	5.0mm	30-60mm	Solid
	4.0mm	22-45mm	
Partially Threaded (Non-Locking)	6.5mm	50-110mm	Cannulated

Plate = Titanium Alloy (Ti-6Al-4V) Type II anodized
Screws = Titanium Alloy (Ti-6Al-4V)